



**Zanco**  
Air Conditioners

# Zanco, Air Of Life

Hvac Product  
VRF Catalogue  
Updated 2025



- +98114121
- +989120586090
- +989304926463
- zanco.co
- zanco.hvac@gmail.com
- www.zanco.co

- Sales Office**  
Unit 302, 3rd Floor, Ghaem Building  
Aftab 15.2, Haraz St., Amol, Mazandaran, Iran
- Factory**  
No. 75, East Eighth Street, Khoramdasht Boulevard  
Abali Road, Pardis, Tehran, Iran

Zanco, With Guarantee Of Jahan Tasisat Diaco Pars



# About Zanco

Jahan Tasisat Diaco Pars Company Has Been Working In The Field Of Consulting, Design, Sales And After-Sales Services Of Advanced Air Conditioning Systems Since 2008 With The Aim Of Providing Services Higher Than The Common Standards In The Country.

Our Most Important Goal Is To Achieve Complete Customer Satisfaction And Provide Comfort And Convenience In Their Homes And Workplaces.

In A Short Time, We Have Been Able To Make Our Name And This Brand Famous In Iran With American Copeland Compressors Made In Thailand And China. In The Post-Sale Phase, Full Support In All Stages Of Design, Implementation, Installation And Remote Work Service In Short-Term Time Frames Is One Of The Main Duties Of The Technical Department Of This Company.

A Variety Of Cooling And Heating Quality Products Such As Chillers And Mini Chillers, Fan Coils And Duct Splits (Ducted Split Units) Are Part Of Our Wide Product Range.

We Believe That Honest Technical And Specialized Services And Advice Regarding Air Conditioning Systems Distinguish Us From Other Colleagues Active In This Sector. Our Technical And Engineering Consulting Services Are Provided To You In Two Stages Before And After The Sale Of The Equipment. In The Pre-Sale Phase, Our Sales And Technical Engineers Will Guide You In Making Decisions And Choosing The Best Type Of Air Conditioning Systems With Advice And Guidance. Providing Technical And Financial Proposals In The Form Of Engineering Documents And Drawings Is One Of The Free Services Of Jahan Tasisat Diaco Pars Company.

All The Offered Products Of Zanco Brand Have A Warranty Card Approved By The Consumer Rights Protection Organization And Are Subject To After-Sales Service. These Services Are Provided By The Representatives Of This Company In Tehran And Other Cities.

Over The Past Few Years, Customer Orientation And Loyalty To Commitments Have Formed The Foundation Of The Company. We Believe That With The Increasing Expectations And Demands Of Today's Smart Consumers In The Air Conditioning Industry, We Are Always Upgrading The Technical Level Of Our Products And Personnel.

# Index

**04 ZRV7 - VA Series Outdoor Unit VRF**

**08 ZRV Min Series Outdoor Unit VRF**

**10 ZRV Mini Series Outdoor Unit VRF**

**13 Modular ZRV Mini Series Outdoor Unit VRF**

**14 Compact Cassette Series Indoor Unit VRF**

**16 Cassette Series Indoor Unit VRF**

**18 Wall Mounted J Series Indoor Unit VRF**

**21 Wall Mounted C Series Indoor Unit VRF**

**23 Slim Duct Q Series Indoor Unit VRF**

**26 Mid ESP Duct Series Indoor Unit VRF**

**34 High ESP Duct Series Indoor Unit VRF**

**37 Fresh Air Processor Series Indoor Unit VRF**

**39 Ceiling & Floor Series Indoor Unit VRF**

**42 Branch Pipe**

VRF Outdoor Unit  
Series : ZRV 7 - VA  
Voltage : 380~415V  
Frequency : 50/60Hz



HP			8	10	12	14
MODEL			ZRV-H250/SR1MVA	ZRV-H280/SR1MVA	ZRV-H330/SR1MVA	ZRV-H400/SR1MVA
CAPACITY	Cooling	kW	25.20	28.00	33.50	40.00
	Heating	kW	27.00	31.50	37.50	45.00
ELECTRIC DATA	Power supply	V~,Hz,Ph	380~415,50/60,3	380~415,50/60,3	380~415,50/60,3	380~415,50/60,3
	Cooling input	kW	5.28	6.48	8.13	9.76
	EER	W/W	4.77	4.32	4.12	4.10
	Heating input	kW	5.09	6.15	7.85	9.74
	COP	W/W	5.30	5.12	4.78	4.62
PERFORMANCE	Air Flow Volume	m³/h	12000	12000	12000	14000
COMPRESSOR	Type		DC Inv	DC Inv	DC Inv	DC Inv
	Quantity		1	1	1	1
FAN MOTOR	Type		DC	DC	DC	DC
	Quantity		1	1	1	2
CONNECTION RATIO		%	50~200	50~200	50~200	50~200
DIMENSION (W*D*H)	Net	mm	990*765*1635	990*765*1635	990*765*1635	1340*765*1635
	Packing	mm	1030*825*1865	1030*825*1865	1030*825*1865	1395*815*1865
WEIGHT	Net	kg	205	205	205	258
	Gross	kg	215	215	215	273
REFRIGERANT PIPING	Max. Length	mm	1000	1000	1000	1000
	Max. Height	mm	110/130	110/130	110/130	110/130
OPERATION RANGE	Cooling	°C	-15~55	-15~55	-15~55	-15~55
	Heating	°C	-30~24	-30~24	-30~24	-30~24

Notes:

- 1.Cooling Capacity: Indoor Temperature 27°C DB/19°C WB; Outdoor Temperature:35°C DB/ 24°C WB.
- 2.Heating Capacity: Indoor Temperature 20°C DB; Outdoor Temperature: 7°C DB/ 6°C WB.
- 3.Piping Length: Equivalent Piping Length: 7.5m, Level Difference: 0m.
- 4.We Can Guarantee The Operation Only Within 130% Combination. If You Want To Connect More Than 130% Combination, Please Contact Us And Discuss The Requirement.
- 5.Anechoic Chamber Conversion Value, Measured In Test Room. During Actual Operation.These Values Are Normally Somewhat Higher As A Result Of Ambient Conditions.
- 6.The Above Designs And Specifications Are Subject To Change Without Prior Notice. Final Specifications Please Refer To Technical Specification Provided By Sales Representative.
- 7.Sound Values Are Measured In A Semi-Anechoic Room, At A Position 1m In Front Of The Unit And 1.3m Above The Floor.
- 8.The Above Combined Types Are Factory-Recommended Type. The Combined Type Also Can Be Combined At Will.

VRF Outdoor Unit  
Series : ZRV 7 - VA  
Voltage : 380~415V  
Frequency : 50/60Hz



HP			16	18	20	22
MODEL			ZRV-H450/SR1MVA	ZRV-H500/SR1MVA	ZRV-H560/SR1MVA	ZRV-H610/SR1MVA
CAPACITY	Cooling	kW	45.00	50.40	56.00	61.50
	Heating	kW	50.00	56.00	63.00	69.00
ELECTRIC DATA	Power supply	V~,Hz,Ph	380~415,50/60,3	380~415,50/60,3	380~415,50/60,3	380~415,50/60,3
	Cooling input	kW	11.39	12.60	14.74	17.04
	EER	W/W	3.95	4.00	3.80	3.61
	Heating input	kW	11.16	13.24	15.25	17.34
	COP	W/W	4.48	4.23	4.13	3.98
PERFORMANCE	Air Flow Volume	m³/h	14000	17800	17800	17800
COMPRESSOR	Type		DC Inv	DC Inv	DC Inv	DC Inv
	Quantity		1	2	2	2
FAN MOTOR	Type		DC	DC	DC	DC
	Quantity		2	2	2	2
CONNECTION RATIO		%	50~200	50~200	50~200	50~200
DIMENSION (W*D*H)	Net	mm	1340*765*1635	1340*765*1635	1340*765*1635	1340*765*1635
	Packing	mm	1395*815*1865	1395*815*1865	1395*815*1865	1395*815*1865
WEIGHT	Net	kg	258	275	317	317
	Gross	kg	273	290	332	332
REFRIGERANT PIPING	Max. Length	mm	1000	1000	1000	1000
	Max. Height	mm	110/130	110/130	110/130	110/130
OPERATION RANGE	Cooling	°C	-15~55	-15~55	-15~55	-15~55
	Heating	°C	-30~24	-30~24	-30~24	-30~24

Notes:

- 1.Cooling Capacity: Indoor Temperature 27°C DB/19°C WB; Outdoor Temperature:35°C DB/ 24°C WB.
- 2.Heating Capacity: Indoor Temperature 20°C DB; Outdoor Temperature: 7°C DB/ 6°C WB.
- 3.Piping Length: Equivalent Piping Length: 7.5m, Level Difference: 0m.
- 4.We Can Guarantee The Operation Only Within 130% Combination. If You Want To Connect More Than 130% Combination, Please Contact Us And Discuss The Requirement.
- 5.Anechoic Chamber Conversion Value, Measured In Test Room. During Actual Operation.These Values Are Normally Somewhat Higher As A Result Of Ambient Conditions.
- 6.The Above Designs And Specifications Are Subject To Change Without Prior Notice. Final Specifications Please Refer To Technical Specification Provided By Sales Representative.
- 7.Sound Values Are Measured In A Semi-Anechoic Room, At A Position 1m In Front Of The Unit And 1.3m Above The Floor.
- 8.The Above Combined Types Are Factory-Recommended Type. The Combined Type Also Can Be Combined At Will.



VRF Outdoor Unit  
Series : ZRV 7 - VA  
Voltage : 380~415V  
Frequency : 50/60Hz



HP			24	26	28	30
MODEL			ZRV-H680/SR1MVA	ZRV-H730/SR1MVA	ZRV-H785/SR1MVA	ZRV-H850/SR1MVA
CAPACITY	Cooling	kW	68.0	73.0	78.5	85.0
	Heating	kW	75.0	81.5	87.5	95.0
ELECTRIC DATA	Power supply	V~,Hz,Ph	380~415,50/60,3	380~415,50/60,3	380~415,50/60,3	380~415,50/60,3
	Cooling input	kW	18.52	20.7	23.55	26.48
	EER	W/W	3.67	3.53	3.33	3.21
	Heating input	kW	18.90	20.69	23.90	27.05
	COP	W/W	3.97	3.94	3.66	3.51
PERFORMANCE	Air Flow Volume	m³/h	29000	29000	29000	30000
COMPRESSOR	Type		DC Inv	DC Inv	DC Inv	DC Inv
	Quantity		2	2	2	2
FAN MOTOR	Type		DC	DC	DC	DC
	Quantity		2	2	2	2
CONNECTION RATIO		%	50~200	50~200	50~200	50~200
DIMENSION (W*D*H)	Net	mm	1850*825*1760	1850*825*1760	1850*825*1760	1850*825*1760
	Packing	mm	1925*930*1930	1925*930*1930	1925*930*1930	1925*930*1930
WEIGHT	Net	kg	386	386	386	392
	Gross	kg	409	409	409	415
REFRIGERANT PIPING	Max. Length	mm	1000	1000	1000	1000
	Max. Height	mm	110/130	110/130	110/130	110/130
OPERATION RANGE	Cooling	°C	-15~55	-15~55	-15~55	-15~55
	Heating	°C	-30~24	-30~24	-30~24	-30~24

Notes:

- 1.Cooling Capacity: Indoor Temperature 27°C DB/19°C WB; Outdoor Temperature:35°C DB/ 24°C WB.
- 2.Heating Capacity: Indoor Temperature 20°C DB; Outdoor Temperature: 7°C DB/ 6°C WB.
- 3.Piping Length: Equivalent Piping Length: 7.5m, Level Difference: 0m.
- 4.We Can Guarantee The Operation Only Within 130% Combination. If You Want To Connect More Than 130% Combination, Please Contact Us And Discuss The Requirement.
- 5.Anechoic Chamber Conversion Value, Measured In Test Room. During Actual Operation.These Values Are Normally Somewhat Higher As A Result Of Ambient Conditions.
- 6.The Above Designs And Specifications Are Subject To Change Without Prior Notice. Final Specifications Please Refer To Technical Specification Provided By Sales Representative.
- 7.Sound Values Are Measured In A Semi-Anechoic Room, At A Position 1m In Front Of The Unit And 1.3m Above The Floor.
- 8.The Above Combined Types Are Factory-Recommended Type. The Combined Type Also Can Be Combined At Will.

VRF Outdoor Unit  
Series : ZRV 7 - VA  
Voltage : 380~415V  
Frequency : 50/60Hz



HP			32	34	36
MODEL			ZRV-H900/SR1MVA	ZRV-H950/SR1MVA	ZRV-H1010SR1MVA
CAPACITY	Cooling	kW	90.0	95.2	101.0
	Heating	kW	100.0	106.0	112.0
ELECTRIC DATA	Power supply	V~,Hz,Ph	380~415,50/60,3	380~415,50/60,3	380~415,50/60,3
	Cooling input	kW	29.42	31.64	33.92
	EER	W/W	3.06	3.01	2.98
	Heating input	kW	29.32	31.65	33.84
	COP	W/W	3.41	3.35	3.31
PERFORMANCE	Air Flow Volume	m³/h	30000	30000	30000
COMPRESSOR	Type		DC Inv	DC Inv	DC Inv
	Quantity		2	2	2
FAN MOTOR	Type		DC	DC	DC
	Quantity		2	2	2
CONNECTION RATIO		%	50~200	50~200	50~200
DIMENSION (W*D*H)	Net	mm	1850*825*1760	1850*825*1760	1850*825*1760
	Packing	mm	1925*930*1930	1925*930*1930	1925*930*1930
WEIGHT	Net	kg	392	418	418
	Gross	kg	415	441	441
REFRIGERANT PIPING	Max. Length	mm	1000	1000	1000
	Max. Height	mm	110/130	110/130	110/130
OPERATION RANGE	Cooling	°C	-15~55	-15~55	-15~55
	Heating	°C	-30~24	-30~24	-30~24

Notes:

- 1.Cooling Capacity: Indoor Temperature 27°C DB/19°C WB; Outdoor Temperature:35°C DB/ 24°C WB.
- 2.Heating Capacity: Indoor Temperature 20°C DB; Outdoor Temperature: 7°C DB/ 6°C WB.
- 3.Piping Length: Equivalent Piping Length: 7.5m, Level Difference: 0m.
- 4.We Can Guarantee The Operation Only Within 130% Combination. If You Want To Connect More Than 130% Combination, Please Contact Us And Discuss The Requirement.
- 5.Anechoic Chamber Conversion Value, Measured In Test Room. During Actual Operation.These Values Are Normally Somewhat Higher As A Result Of Ambient Conditions.
- 6.The Above Designs And Specifications Are Subject To Change Without Prior Notice. Final Specifications Please Refer To Technical Specification Provided By Sales Representative.
- 7.Sound Values Are Measured In A Semi-Anechoic Room, At A Position 1m In Front Of The Unit And 1.3m Above The Floor.
- 8.The Above Combined Types Are Factory-Recommended Type. The Combined Type Also Can Be Combined At Will.

VRF Outdoor Unit  
Series : ZRV Min  
Voltage : Three Phase  
Frequency : 50/60Hz



Model			ZRV-H120/SR1DCS1A	ZRV-H140/SR1DCS1A
Capacity	Cooling	kW	12.1	14.0
	Heating	kW	14.0	16.0
Electric Data	Power Supply	V~,Hz,Ph	380~415,3N~50/60	380~415,3N~50/60
	Cooling Power Input	kW	3.25	3.80
	Heating Power Input	kW	3.45	3.85
	Cooling Current	A	5.00	5.80
	Heating Current	A	5.30	5.90
	EER		3.72	3.68
	COP		4.06	4.16
Performance	Air Flow Volume	m³/h	5100	5100
	Noise Level	dB(A)	56	56
Piping Limite	Height difference between IDU and ODU	m	20	20
	Height difference between IDU and IDU	m	10	10
	Between the first brance and the Farthest IDU	m	30	30
	Total Pipe length	m	100	100
Connection Ratio		%	50-130%	50-130%
Dimension (W*D*H)	Net	mm	990*420*860	990*420*860
	Packing	mm	1100*545*980	1100*545*980
Weight	Net	kg	79	79
	Gross	kg	90	90
Refrigerant Type			R410A	R410A
Pipe Diameter	Liquid Side	mm(inch)	9.52(3/8)	9.52(3/8)
	Gas Side	mm(inch)	15.88(5/8)	15.88(5/8)
Operation Range	Cooling	°C	-15~49	-15~49/-20~24
	Heating	°C	-20~24	-20~24
Stuffing Quantity	20/40/40H	unit	40/84/84	40/84/84

Notes:

- 1.Cooling Capacity: Indoor Temperature 27°C DB/ 19°C WB; Outdoor Temperature:35°C DB/ 24°C WB.
- 2.Cooling Capacity (Tropical): Indoor Temperature 27°C DB/19°C WB;Outdoor Temperature:46.1°C DB.
- 3.Heating Capacity: Indoor Temperature 20°C DB; Outdoor Temperature: 7°C DB/ 6°C WB.
- 4.Piping Length: Equivalent Piping Length: 7.5m, Level Difference: 0m.
- 5.Anechoic Chamber Conversion Value, Measured In Test Room. During Actual Operation. These Values Are Normally Somewhat Higher As A Result Of Ambient Conditions.
- 6.The Above Designs And Specifications Are Subject To Change Without Prior Notice. Final Specifications Please Refer To Technical Specification Provided By Sales Representative.

VRF Outdoor Unit  
Series : ZRV Min  
Voltage : Three Phase  
Frequency : 50/60Hz



Model			ZRV-H160/SR1DCS1A	ZRV-H180/SR1DCS7A
Capacity	Cooling	kW	15.5	18
	Heating	kW	18	20
Electric Data	Power Supply	V~,Hz,Ph	380~415,3N~50/60	380~415,3N~50/60
	Cooling Power Input	kW	4.80	5.20
	Heating Power Input	kW	4.60	5.00
	Cooling Current	A	7.60	8.00
	Heating Current	A	7.30	7.70
	EER		3.23	3.46
	COP		3.91	4.00
Performance	Air Flow Volume	m³/h	5100	6700
	Noise Level	dB(A)	57	58
Piping Limite	Height difference between IDU and ODU	m	30	30
	Height difference between IDU and IDU	m	10	10
	Between the first brance and the Farthest IDU	m	30	30
	Total Pipe length	m	100	100
Connection Ratio		%	50-130%	50-130%
Dimension (W*D*H)	Net	mm	990*420*860	940*340*1320
	Packing	mm	1100*545*980	1080*430*1440
Weight	Net	kg	79	90
	Gross	kg	90	100
Refrigerant Type			R410A	R410A
Pipe Diameter	Liquid Side	mm(inch)	9.52(3/8)	9.52(3/8)
	Gas Side	mm(inch)	15.88(5/8)	19.05(6/8)
Operation Range	Cooling	°C	-15~49/-20~24	-15~49/-20~24
	Heating	°C	-20~24	-20~24
Stuffing Quantity	20/40/40H	unit	40/84/84	27/55/54

Notes:

- 1.Cooling Capacity: Indoor Temperature 27°C DB/ 19°C WB; Outdoor Temperature:35°C DB/ 24°C WB.
- 2.Cooling Capacity (Tropical): Indoor Temperature 27°C DB/19°C WB;Outdoor Temperature:46.1°C DB.
- 3.Heating Capacity: Indoor Temperature 20°C DB; Outdoor Temperature: 7°C DB/ 6°C WB.
- 4.Piping Length: Equivalent Piping Length: 7.5m, Level Difference: 0m.
- 5.Anechoic Chamber Conversion Value, Measured In Test Room. During Actual Operation. These Values Are Normally Somewhat Higher As A Result Of Ambient Conditions.
- 6.The Above Designs And Specifications Are Subject To Change Without Prior Notice. Final Specifications Please Refer To Technical Specification Provided By Sales Representative.

VRF Outdoor Unit  
Series : ZRV Mini  
Voltage : Single Phase  
Frequency : 50/60Hz



Model			ZRV-H80/NR1A	ZRV-H100/NR1A
Capacity	Cooling	kW	8.0	10.0
	Heating	kW	9.00	12.00
Electric Data	Power Supply	V~,Hz,Ph	220~240,50/60,1	220~240,50/60,1
	Cooling Power Input	kW	2.00	2.55
	Heating Power Input	kW	1.95	2.97
	Cooling Current	A	9.10	11.60
	Heating Current	A	8.90	13.50
	EER		4.00	3.92
	COP		4.62	4.04
Performance	Air Flow Volume	m³/h	4100	4100
	Noise Level	dB(A)	54	54
Piping Limite	Level difference between IDU and ODU	m	20	20
	Level difference between IDU and IDU	m	8	8
	Between the first brance and the Farthest IDU	m	20	20
	Total Pipe length	m	40	40
Connection Ratio		%	50~130	50~130
Dimension (W*D*H)	Net	mm	970*370*800	970*370*800
	Packing	mm	1105*495*890	1105*495*890
Weight	Net	kg	60	60
	Gross	kg	64.5	64.5
Refrigerant Type			R410a	R410a
Pipe Diameter	Liquid Side	mm(inch)	9.52(3/8)	9.52(3/8)
	Gas Side	mm(inch)	15.88(5/8)	15.88(5/8)
Operation Range	Cooling	°C	-15~49	-15~49
	Heating	°C	-15~27	-15~27
Stuffing Quantity	20/40/40H	unit	44/92/138	44/92/138

VRF Outdoor Unit  
Series : ZRV Mini  
Voltage : Single Phase  
Frequency : 50/60Hz



Model			ZRV-H120/NR1A	ZRV-H140/NR1A
Capacity	Cooling	kW	12.1	14.0
	Heating	kW	14.00	16.00
Electric Data	Power Supply	V~,Hz,Ph	220~240,50/60,1	220~240,50/60,1
	Cooling Power Input	kW	3.20	3.75
	Heating Power Input	kW	3.45	3.85
	Cooling Current	A	14.50	17.00
	Heating Current	A	15.70	17.50
	EER		3.78	3.73
	COP		4.06	4.16
Performance	Air Flow Volume	m³/h	4890	5100
	Noise Level	dB(A)	56	56
Piping Limite	Level difference between IDU and ODU	m	20	30
	Level difference between IDU and IDU	m	8	8
	Between the first brance and the Farthest IDU	m	20	20
	Total Pipe length	m	40	100
Connection Ratio		%	50~130	50~130
Dimension (W*D*H)	Net	mm	970*370*800	990*420*860
	Packing	mm	1105*495*890	1100*545*980
Weight	Net	kg	70	80
	Gross	kg	75	91
Refrigerant Type			R410a	R410a
Pipe Diameter	Liquid Side	mm(inch)	9.52(3/8)	9.52(3/8)
	Gas Side	mm(inch)	15.88(5/8)	15.88(5/8)
Operation Range	Cooling	°C	-15~49	-15~49
	Heating	°C	-15~27	-15~27
Stuffing Quantity	20/40/40H	unit	44/92/138	40/84/84

VRF Outdoor Unit  
Series : ZRV Mini  
Voltage : Single Phase  
Frequency : 50/60Hz



Model			ZRV-H160/NR1A	ZRVT-H180/NR1A-I	ZRVT-H200/NR1A-I
Capacity	Cooling	kW	15.5	18.0	20.0
	Heating	kW	18.00	20.00	22.40
Electric Data	Power Supply	V~,Hz,Ph	220~240,50/60,1	220~240,50/60,1	220~240,50/60,1
	Cooling Power Input	kW	4.80	5.20	5.90
	Heating Power Input	kW	4.60	5.20	6.20
	Cooling Current	A	21.80	24.10	27.36
	Heating Current	A	20.90	24.10	28.76
	EER		3.23	3.46	3.39
	COP		3.91	3.85	3.61
Performance	Air Flow Volume	m³/h	5100	6700	6700
	Noise Level	dB(A)	56	57	57
Piping Limite	Level difference between IDU and ODU	m	30	50	50
	Level difference between IDU and IDU	m	8	15	15
	Between the first brance and the Farthest IDU	m	20	40	40
	Total Pipe length	m	100	150	150
Connection Ratio		%	50~130	50~130	50~130
Dimension (W*D*H)	Net	mm	990*420*860	940*340*1320	940*340*1320
	Packing	mm	1100*545*980	1080*430*1440	1080*430*1440
Weight	Net	kg	80	90	90
	Gross	kg	91	100	100
Refrigerant Type			R410a	R410a	R410a
Pipe Diameter	Liquid Side	mm(inch)	9.52(3/8)	9.52(3/8)	9.52(3/8)
	Gas Side	mm(inch)	15.88(5/8)	19.05(6/8)	19.05(6/8)
Operation Range	Cooling	°C	-15~49	-15~55	-15~55
	Heating	°C	-15~27	-20~24	-20~24
Stuffing Quantity	20/40/40H	unit	40/84/84	27/55/54	27/55/54

VRF Outdoor Unit  
Series : Modular ZRV Mini  
Voltage : Three Phase  
Frequency : 50/60Hz



Model			ZRV-H252/SR1DCMA-I	ZRV-H280/SR1DCMA-I	ZRV-H335/SR1DCMA-I
Power Supply		V~,Hz,Ph	380~415,3N~50/60	380~415,3N~50/60	380~415,3N~50/60
Cooling	Capacity(T1/T3)	kW	25.2/22	28.5/24	33.5/28
	Input(T1/T3)	kW	5.75/5.6	7.50/7.30	7.95/7.80
	Rated current(T1/T3)	A	9.37/8.90	12.60/12.20	13.40/13.10
Heating	Capacity	kW	27.00	31.5	37.50
	COP	W/W	4.78	4.70	4.78
	Input	kW	5.65	6.70	7.85
	Rated current	A	9.50	11.40	13.30
performance	EER(T1/T3)	W/W	4.38/3.93	3.80/3.29	4.21/4.00
	COP	W/W	4.78	4.70	4.78
Air Flow Volume		CFM	6474	6474	9000
		m3/h	11000	11000	15300
Noise Level		dB(A)	43-57	43-57	43-58
Dimension (W*D*H)	Net	mm	1120*400*1540	1120*400*1540	1120*400*1540
	Packing	mm	1270*560*1710	1270*560*1710	1270*560*1710
Weight	Net	kg	145	145	152
	Gross	kg	155	155	162
Refrigerant type	Type	/	R410A	R410A	R410A
	Charged Volume	kg	7.00	7.00	8.50
Refrigerant Piping	Liquid Side	mm	12.7(1/2)	12.7(1/2)	12.7(1/2)
	Gas Side	mm	22.22(7/8)	22.22(7/8)	22.22(7/8)
	Max. Length	m	560	560	560
	Max. Heigth	m	50	50	50
Ambient Temperature Range(Cooling/Heating)		°C	-15~55/-20~24	-15~55/-20~24	-15~55/-20~24
Stuffing Quantity	20/40/40H	Unit	17/37/37	17/37/37	17/37/37

VRF Indoor Unit  
Series : Compact Cassette  
Frequency : 50/60Hz



Model			ZRVCA-H15/NR1DYBA	ZRVCA-H22/NR1DYBA	ZRVCA-H28/NR1DYBA
Capacity	Cooling	kW	1.5	2.2	2.8
	Heating	kW	1.8	2.5	3.2
Electric Data	Power Supply	V~,Hz,Ph	220~240,50(60),1	220~240,50(60),1	220~240,50(60),1
	Rated Power	W	30	30	30
Performance	Air Flow Volume(Tu/Hi/Mid/Low)	m3/h	570/530/480/450	570/530/480/450	570/530/480/450
	Noise Level(Tu/Hi/Mid/Low)	dB(A)	34/33/32	34/33/32	34/33/32
Dimension (W*D*H)	Net(Body)	mm	570*570*260	570*570*260	570*570*260
	Packing(Body)	mm	720*650*290	720*650*290	720*650*290
	Net(Panel)	mm	650*650*55	650*650*55	650*650*55
	Packing(Panel)	mm	710*710*80	710*710*80	710*710*80
Weight	Net/Gross(Body)	kg	13.5/16.5	13.5/16.5	13.5/16.5
	Net/Gross(Panel)	kg	2.2/3.7	2.2/3.7	2.2/3,7
Refrigerant Type			R410A	R410A	R410A
Pipe Diameter	Liquid Side	mm(inch)	6.35	6.35	6.35
	Gas Side	mm(inch)	9.52	9.52	9.52
	Drainage	mm(inch)	R3/4in(DN20)	R3/4in(DN20)	R3/4in(DN20)
Stuffing Quantity	20/40/40H	unit	216/432/486	216/432/486	216/432/486

Notes:

- 1.Cooling Capacity: Indoor Temperature 27°C DB/19°C WB;Outdoor Temperature:35°C DB/24°C WB.
- 2.Heating Capacity: Indoor Temperature 20°C DB;Outdoor Temperature:7°C DB/6°C WB.
- 3.Piping Length: Equivalent Piping Length: 7.5m, Level Difference: 0m.
- 4.Sound Level Is Measured At 1.4m Below The Unit.
- 5.The Above Designs And Specifications Are Subject To Change Without Prior Notice. Final Specifications Please Refer To Technical Specification Provided By Sales Representative.

VRF Indoor Unit  
Series : Compact Cassette  
Frequency : 50/60Hz



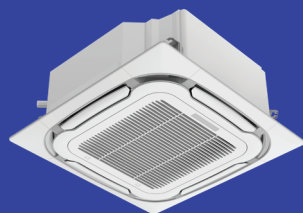
Model			ZRVCA-H36/NR1DYBA	ZRVCA-H45/NR1DYBA	ZRVCA-H56/NR1DYBA
Capacity	Cooling	kW	3.6	4.5	5.6
	Heating	kW	4.0	5.0	6.3
Electric Data	Power Supply	V~,Hz,Ph	220~240,50(60),1	220~240,50(60),1	220~240,50(60),1
	Rated Power	W	30	30	30
Performance	Air Flow Volume(Tu/Hi/Mid/Low)	m3/h	650/620/560/540	760/740/660/600	800/760/680/620
	Noise Level(Tu/Hi/Mid/Low)	dB(A)	38/36/35	44/41/37	45/42/38
Dimension (W*D*H)	Net(Body)	mm	570*570*260	570*570*260	570*570*260
	Packing(Body)	mm	720*650*290	720*650*290	720*650*290
	Net(Panel)	mm	650*650*55	650*650*55	650*650*55
	Packing(Panel)	mm	710*710*80	710*710*80	710*710*80
Weight	Net/Gross(Body)	kg	14.5/17.5	15.5/18.5	15.5/18.5
	Net/Gross(Panel)	kg	2.2/3,7	2.2/3.7	2.2/3.7
Refrigerant Type			R410A	R410A	R410A
Pipe Diameter	Liquid Side	mm(inch)	6.35	6.35	6.35
	Gas Side	mm(inch)	12.7	12.7	12.7
	Drainage	mm(inch)	R3/4in(DN20)	R3/4in(DN20)	R3/4in(DN20)
Stuffing Quantity	20/40/40H	unit	216/432/486	216/432/486	216/432/486

Notes:

- 1.Cooling Capacity: Indoor Temperature 27°C DB/19°C WB;Outdoor Temperature:35°C DB/24°C WB.
- 2.Heating Capacity: Indoor Temperature 20°C DB;Outdoor Temperature:7°C DB/6°C WB.
- 3.Piping Length: Equivalent Piping Length: 7.5m, Level Difference: 0m.
- 4.Sound Level Is Measured At 1.4m Below The Unit.
- 5.The Above Designs And Specifications Are Subject To Change Without Prior Notice. Final Specifications Please Refer To Technical Specification Provided By Sales Representative.



VRF Indoor Unit  
Series : Cassette  
Frequency : 50Hz



Model			ZRVCA-H71/4R1YB	ZRVCA-H80/4R1YB	ZRVCA-H90/4R1YB
Capacity	Cooling	kW	7.1	8.0	9.0
	Heating	kW	8.0	9.0	10.0
Electric Data	Power Supply	V~,Hz,Ph	220~240,50,1	220~240,50,1	220~240,50,1
	Rated Power	W	100	100	100
Performance	Air Flow Volume(Hi/Mid/Low)	m3/h	1250/1040/910	1250/1040/910	1400/1200/1000
	Noise Level(Hi/Mid/Low)	dB(A)	43/39/37	43/39/37	43/39/37
Dimension (W*D*H)	Net(Body)	mm	840*840*246	840*840*246	840*840*246
	Packing(Body)	mm	915*915*315	915*915*315	915*915*315
	Net(Panel)	mm	950*950*55	950*950*55	950*950*55
	Packing(Panel)	mm	1000*1000*100	1000*1000*100	1000*1000*100
Weight	Net/Gross(Body)	kg	25/29	25/29	25/29
	Net/Gross(Panel)	kg	5.7/8.3	5.7/8.3	5.7/8.3
Refrigerant Type			R410A	R410A	R410A
Pipe Diameter	Liquid Side	mm(inch)	9.52	9.52	9.52
	Gas Side	mm(inch)	15.88	15.88	15.88
	Drainage	mm(inch)	R3/4in(DN20)	R3/4in(DN20)	R3/4in(DN20)
Stuffing Quantity	20/40/40H	unit	77/164/175	77/164/175	77/164/175

Notes:

- 1.Cooling Capacity: Indoor Temperature 27°C DB/19°C WB;Outdoor Temperature:35°C DB/24°C WB.
- 2.Heating Capacity: Indoor Temperature 20°C DB;Outdoor Temperature:7°C DB/6°C WB.
- 3.Piping Length: Equivalent Piping Length: 7.5m, Level Difference: 0m.
- 4.Sound Level Is Measured At 1.4m Below The Unit.
- 5.The Above Designs And Specifications Are Subject To Change Without Prior Notice. Final Specifications Please Refer To Technical Specification Provided By Sales Representative.

VRF Indoor Unit  
Series : Cassette  
Frequency : 50Hz



Model			ZRVCA-H100/4R1YB	ZRVCA-H112/4R1YB
Capacity	Cooling	kW	10.0	11.2
	Heating	kW	11.2	12.8
Electric Data	Power Supply	V~,Hz,Ph	220~240,50,1	220~240,50,1
	Rated Power	W	190	190
Performance	Air Flow Volume(Hi/Mid/Low)	m3/h	1850/1440/1260	1850/1440/1260
	Noise Level(Hi/Mid/Low)	dB(A)	45/40/39	45/40/39
Dimension (W*D*H)	Net(Body)	mm	840*840*288	840*840*288
	Packing(Body)	mm	915*915*355	915*915*355
	Net(Panel)	mm	950*950*55	950*950*55
	Packing(Panel)	mm	1000*1000*100	1000*1000*100
Weight	Net/Gross(Body)	kg	28.5/32.5	28.5/32.5
	Net/Gross(Panel)	kg	5.7/8.3	5.7/8.3
Refrigerant Type			R410A	R410A
Pipe Diameter	Liquid Side	mm(inch)	9.52	9.52
	Gas Side	mm(inch)	15.88	15.88
	Drainage	mm(inch)	R3/4in(DN20)	R3/4in(DN20)
Stuffing Quantity	20/40/40H	unit	77/164/175	77/164/175

Notes:

- 1.Cooling Capacity: Indoor Temperature 27°C DB/19°C WB;Outdoor Temperature:35°C DB/24°C WB.
- 2.Heating Capacity: Indoor Temperature 20°C DB;Outdoor Temperature:7°C DB/6°C WB.
- 3.Piping Length: Equivalent Piping Length: 7.5m, Level Difference: 0m.
- 4.Sound Level Is Measured At 1.4m Below The Unit.
- 5.The Above Designs And Specifications Are Subject To Change Without Prior Notice. Final Specifications Please Refer To Technical Specification Provided By Sales Representative.

VRF Indoor Unit  
Series : Cassette  
Frequency : 50Hz



Model			ZRVCA-H125/4R1YB	ZRVCA-H140/4R1YAB
Capacity	Cooling	kW	12.5	14.0
	Heating	kW	14.0	15.0
Electric Data	Power Supply	V~,Hz,Ph	220~240,50,1	220~240,50,1
	Rated Power	W	190	190
Performance	Air Flow Volume(Hi/Mid/Low)	m3/h	1850/1440/1260	1850/1440/1260
	Noise Level(Hi/Mid/Low)	dB(A)	45/40/39	46/41/39
Dimension (W*D*H)	Net(Body)	mm	840*840*288	840*840*288
	Packing(Body)	mm	915*915*355	915*915*355
	Net(Panel)	mm	950*950*55	950*950*55
	Packing(Panel)	mm	1000*1000*100	1000*1000*100
Weight	Net/Gross(Body)	kg	28.5/32.5	28.5/32.5
	Net/Gross(Panel)	kg	5.7/8.3	5.7/8.3
Refrigerant Type			R410A	R410A
Pipe Diameter	Liquid Side	mm(inch)	9.52	9.52
	Gas Side	mm(inch)	15.88	15.88
	Drainage	mm(inch)	R3/4in(DN20)	R3/4in(DN20)
Stuffing Quantity	20/40/40H	unit	77/164/175	77/164/175

Notes:

1.Cooling Capacity: Indoor Temperature 27°C DB/19°C WB;Outdoor Temperature:35°C DB/24°C WB.

2.Heating Capacity: Indoor Temperature 20°C DB;Outdoor Temperature:7°C DB/6°C WB.

3.Piping Length: Equivalent Piping Length: 7.5m, Level Difference: 0m.

4.Sound Level Is Measured At 1.4m Below The Unit.

5.The Above Designs And Specifications Are Subject To Change Without Prior Notice. Final Specifications Please Refer To Technical Specification Provided By Sales Representative.

VRF Indoor Unit  
Series : Wall Mounted J  
Frequency : 50/60Hz



Model			ZRVWM-H022/NR1DJA	ZRVWM-H028/NR1DJA	ZRVWM-H036/NR1DJA
Capacity	Cooling	kW	2.2	2.8	3.6
	Heating	kW	2.6	3.2	4.0
Electric Data	Power Supply	V~,Hz,Ph	220~240,50(60),1	220~240,50(60),1	220~240,50(60),1
	Rated Power	W	20	20	20
Performance	Air Flow Volume(Hi/Mid/Low)	m³/h	520/460/400	520/460/400	520/460/400
	Noise Level(Hi/Mid/Low)	dB(A)	38/33/27	38/33/27	38/33/27
Dimension (W*H*D)	Net	mm	881*294*194	881*294*194	881*294*194
	Packing	mm	965*370*282	965*370*282	965*370*282
Weight	Net/Gross	kg	10.5/13	10.5/13	10.5/13
Pipe Diameter	Liquid Side	mm(inch)	6.35(1/4)	6.35(1/4)	6.35(1/4)
	Gas Side	mm(inch)	9.52(3/8)	9.52(3/8)	9.52(3/8)
	Drainage	mm(inch)	R3/4in(DN20)	R3/4in(DN20)	R3/4in(DN20)
Stuffing Quantity	20/40/40H	unit	316/647/737	316/647/737	316/647/737

Notes:

1.Cooling Capacity: Indoor Temperature 27°C DB/19°C WB;Outdoor Temperature:35°C DB/24°C WB.

2.Heating Capacity: Indoor Temperature 20°C DB;Outdoor Temperature:7°C DB/6°C WB.

3.Piping Length: Equivalent Piping Length: 7.5m, Level Difference: 0m.

4.Sound Level Is Measured 1m Below The Air Outlet Horizontally And Vertically.

5.The Above Designs And Specifications Are Subject To Change Without Prior Notice. Final Specifications Please Refer To Technical Specification Provided By Sales Representative.

VRF Indoor Unit  
Series : Wall Mounted J  
Frequency : 50/60Hz



Model			ZRVWM-H045/NR1DJA	ZRVWM-H056/NR1DJA	ZRVWM-H071/NR1DJA
Capacity	Cooling	kW	4.5	5.6	7.1
	Heating	kW	5.0	6.3	8.0
Electric Data	Power Supply	V~,Hz,Ph	220~240,50(60),1	220~240,50(60),1	220~240,50(60),1
	Rated Power	W	30	30	40
Performance	Air Flow Volume(Hi/Mid/Low)	m³/h	850/750/660	850/750/660	1000/900/800
	Noise Level(Hi/Mid/Low)	dB(A)	42/38/34	42/38/34	44/40/37
Dimension (W*H*D)	Net	mm	997*316*227	997*316*227	1132*330*232
	Packing	mm	1067*385*312	1067*385*312	1205*400*317
Weight	Net/Gross	kg	13.5/16.5	13.5/16.5	15.5/19
Pipe Diameter	Liquid Side	mm(inch)	6.35(1/4)	6.35(1/4)	6.35(1/4)
	Gas Side	mm(inch)	12.7(1/2)	12.7(1/2)	15.88(5/8)
	Drainage	mm(inch)	R3/4in(DN20)	R3/4in(DN20)	R3/4in(DN20)
Stuffing Quantity	20/40/40H	unit	241/498/563	241/498/563	176/410/465

Notes:

- 1.Cooling Capacity: Indoor Temperature 27°C DB/19°C WB;Outdoor Temperature:35°C DB/24°C WB.
- 2.Heating Capacity: Indoor Temperature 20°C DB;Outdoor Temperature:7°C DB/6°C WB.
- 3.Piping Length: Equivalent Piping Length: 7.5m, Level Difference: 0m.
- 4.Sound Level Is Measured 1m Below The Air Outlet Horizontally And Vertically.
- 5.The Above Designs And Specifications Are Subject To Change Without Prior Notice. Final Specifications Please Refer To Technical Specification Provided By Sales Representative.

VRF Indoor Unit  
Series : Wall Mounted C  
Frequency : 50Hz



Model			ZRVWM-H080/NR1DCA	ZRVWM-H090/NR1DCA
Capacity	Cooling	kW	8	9
	Heating	kW	9	10
Power Supply		V~,Hz,Ph	220~240,50/60,1	220~240,50/60,1
Performance	Air Flow Volume(Hi/Mid/Low)	m3/h	1500/1400/1100/950	1500/1400/1100/950
	Noise Level(Hi/Mid/Low)	dB(A)	48/46/43/40/38	48/46/43/40/38
Dimension (W*D*H)	Net (W*H*D)	mm	1460*375*270	1460*375*270
	Packing (W*H*D)	mm	1555*460*377	1555*460*377
Weight	Net/Gross	kg	23/27	23/27
Pipe Diameter	Liquid Side	mm(inch)	9.52(3/8)	9.52(3/8)
	Gas Side	mm(inch)	15.88(5/8)	15.88(5/8)
	Drainage	mm(inch)	R3/4in(DN20)	R3/4in(DN20)
Stuffing Quantity	20/40/40H	unit	109/232/257	109/232/257

Notes:

- 1.Cooling Capacity: Indoor Temperature 27°C DB/19°C WB;Outdoor Temperature:35°C DB/24°C WB.
- 2.Heating Capacity: Indoor Temperature 20°C DB;Outdoor Temperature:7°C DB/6°C WB.
- 3.Piping Length: Equivalent Piping Length: 7.5m, Level Difference: 0m.
- 4.Sound Level Is Measured 1m Below The Air Outlet Horizontally And Vertically.
- 5.The Above Designs And Specifications Are Subject To Change Without Prior Notice. Final Specifications Please Refer To Technical Specification Provided By Sales Representative.

VRF Indoor Unit  
Series : Wall Mounted C  
Frequency : 50Hz

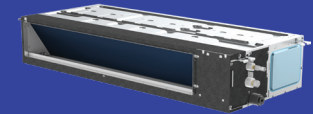


Model			ZRVWM-H100/NR1DCA	ZRVWM-H110/NR1DCA
Capacity	Cooling	kW	10	11
	Heating	kW	11	12.0
Power Supply		V~,Hz,Ph	220~240,50/60,1	220~240,50/60,1
Performance	Air Flow Volume(Hi/Mid/Low)	m3/h	1500/1400/1100/950	1500/1400/1100/950
	Noise Level(Hi/Mid/Low)	dB(A)	48/46/43/40/38	48/46/43/40/38
Dimension (W*D*H)	Net (W*H*D)	mm	1460*375*270	1460*375*270
	Packing (W*H*D)	mm	1555*460*377	1555*460*377
Weight	Net/Gross	kg	23/27	23/27
Pipe Diameter	Liquid Side	mm(inch)	9.52(3/8)	9.52(3/8)
	Gas Side	mm(inch)	15.88(5/8)	15.88(5/8)
	Drainage	mm(inch)	R3/4in(DN20)	R3/4in(DN20)
Stuffing Quantity	20/40/40H	unit	109/232/257	109/232/257

Notes:

- 1.Cooling Capacity: Indoor Temperature 27°C DB/19°C WB;Outdoor Temperature:35°C DB/24°C WB.
- 2.Heating Capacity: Indoor Temperature 20°C DB;Outdoor Temperature:7°C DB/6°C WB.
- 3.Piping Length: Equivalent Piping Length: 7.5m, Level Difference: 0m.
- 4.Sound Level Is Measured 1m Below The Air Outlet Horizontally And Vertically.
- 5.The Above Designs And Specifications Are Subject To Change Without Prior Notice. Final Specifications Please Refer To Technical Specification Provided By Sales Representative.

VRF Indoor Unit  
Series : Slim Duct Q  
Frequency : 50/60Hz



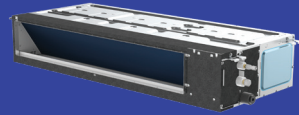
Model			ZRVLD-H15/NR1DQ	ZRVLD-H22/NR1DQ	ZRVLD-H28/NR1DQ
Capacity	Cooling	kW	1.5	2.2	2.8
	Heating	kW	1.8	2.5	3.2
Electric Data	Power Supply	V~,Hz,Ph	220-240~,50/60Hz,1	220-240~,50/60Hz,1	220-240~,50/60Hz,1
	Rated Power	W	31	31	31
Performance	Air Flow Volume(Tu/Hi/Mid/Low)	m³/h	460/400/340	460/400/340	460/400/340
	Noise Level(Hi/Mid/Low)	dB(A)	30/26/22	30/26/22	30/26/22
	External Static Pressure(ESP)	Pa	13(0~50)	13(0~50)	13(0~50)
Dimension (W*D*H)	Net	mm	550*450*198	550*450*198	550*450*198
	Packing	mm	715*535*255	715*535*255	715*535*255
Weight	Net/Gross	kg	11/13.5	11/13.5	11/13.5
Pipe Diameter	Liquid Side	mm(inch)	6.35(1/4)	6.35(1/4)	6.35(1/4)
	Gas Side	mm(inch)	9.52(3/8)	9.52(3/8)	9.52(3/8)
	Drainage	mm(inch)	R1in(DN25)	R1in(DN25)	R1in(DN25)
Stuffing Quantity	20/40/40H	unit	306/621/720	306/621/720	306/621/720

Notes:

- 1.Cooling Capacity: Indoor Temperature 27°C DB/19°C WB;Outdoor Temperature:35°C DB/24°C WB.
- 2.Heating Capacity: Indoor Temperature 20°C DB;Outdoor Temperature:7°C DB/6°C WB.
- 3.Piping Length: Equivalent Piping Length: 7.5m, Level Difference: 0m.
- 4.Sound Level Is Measured At 1.4m Below The Unit.
- 5.The Above Designs And Specifications Are Subject To Change Without Prior Notice. Final Specifications Please Refer To Technical Specification Provided By Sales Representative.



VRF Indoor Unit  
Series : Slim Duct Q  
Frequency : 50/60Hz



Model			ZRVLD-H36/NR1DQ	ZRVLD-H45/NR1DQ
Capacity	Cooling	kW	3.6	4.5
	Heating	kW	4.0	5.0
Electric Data	Power Supply	V~,Hz,Ph	220-240~,50/60Hz,1	220-240~,50/60Hz,1
	Rated Power	W	31	31
Performance	Air Flow Volume(Tu/Hi/Mid/Low)	m³/h	605/500/430	800/680/550
	Noise Level(Hi/Mid/Low)	dB(A)	30/28/24	30/26/22
	External Static Pressure(ESP)	Pa	13(0~50)	13(0~50)
Dimension (W*D*H)	Net	mm	700*450*198	900*450*198
	Packing	mm	865*535*255	1065*535*255
Weight	Net/Gross	kg	13/16	15.5/18.5
Pipe Diameter	Liquid Side	mm(inch)	6.35(1/4)	6.35(1/4)
	Gas Side	mm(inch)	12.7(1/2)	12.7(1/2)
	Drainage	mm(inch)	R1in(DN25)	R1in(DN25)
Stuffing Quantity	20/40/40H	unit	243/504/570	198/396/440

Notes:

1.Cooling Capacity: Indoor Temperature 27°C DB/19°C WB;Outdoor Temperature:35°C DB/24°C WB.

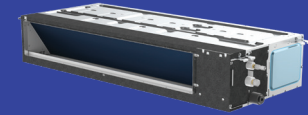
2.Heating Capacity: Indoor Temperature 20°C DB;Outdoor Temperature:7°C DB/6°C WB.

3.Piping Length: Equivalent Piping Length: 7.5m, Level Difference: 0m.

4.Sound Level Is Measured At 1.4m Below The Unit.

5.The Above Designs And Specifications Are Subject To Change Without Prior Notice. Final Specifications Please Refer To Technical Specification Provided By Sales Representative.

VRF Indoor Unit  
Series : Slim Duct Q  
Frequency : 50/60Hz



Model			ZRVLD-H56/NR1DQ	ZRVLD-H71/NR1DQ
Capacity	Cooling	kW	5.6	7.1
	Heating	kW	6.3	8.0
Electric Data	Power Supply	V~,Hz,Ph	220-240~,50/60Hz,1	220-240~,50/60Hz,1
	Rated Power	W	31	65
Performance	Air Flow Volume(Tu/Hi/Mid/Low)	m³/h	900/750/600	1145/945/700
	Noise Level(Hi/Mid/Low)	dB(A)	30/26/22	36/32/28
	External Static Pressure(ESP)	Pa	13(0~50)	13(0~50)
Dimension (W*D*H)	Net	mm	900*450*198	1100*450*198
	Packing	mm	1065*535*255	1265*535*255
Weight	Net/Gross	kg	15.5/18.5	18.5/21.5
Pipe Diameter	Liquid Side	mm(inch)	6.35(1/4)	9.52(3/8)
	Gas Side	mm(inch)	12.7(1/2)	15.88(5/8)
	Drainage	mm(inch)	R1in(DN25)	R1in(DN25)
Stuffing Quantity	20/40/40H	unit	198/396/440	171/360/400

Notes:

1.Cooling Capacity: Indoor Temperature 27°C DB/19°C WB;Outdoor Temperature:35°C DB/24°C WB.

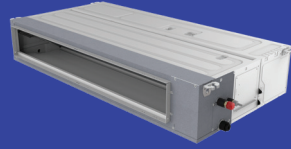
2.Heating Capacity: Indoor Temperature 20°C DB;Outdoor Temperature:7°C DB/6°C WB.

3.Piping Length: Equivalent Piping Length: 7.5m, Level Difference: 0m.

4.Sound Level Is Measured At 1.4m Below The Unit.

5.The Above Designs And Specifications Are Subject To Change Without Prior Notice. Final Specifications Please Refer To Technical Specification Provided By Sales Representative.

VRF Indoor Unit  
Series : Mid ESP Duct  
Frequency : 50/60Hz



Model			ZRVMD-H45/NR1DM	ZRVMD-H56/NR1DM	ZRVMD-H71/NR1DM
Capacity	Cooling	kW	4.5	5.6	7.1
	Heating	kW	5.6	6.3	8.0
Electric Data	Power Supply	V~,Hz,Ph	220~240,50/60,1	220~240,50/60,1	220~240,50/60,1
	Rated Power	W	110	110	125
Performance	Air Flow Volume(Tu/Hi/Mid/Low)	m³/h	1000/920/790/700	1000/920/790/700	1680/1350/1100/950
	Noise Level(Hi/Mid/Low)	dB(A)	39/37/35	39/37/35	40/38/36
	External Static Pressure(ESP)	Pa	50(0-150)	50(0-150)	50(0-150)
Dimension (W*D*H)	Net	mm	1000*700*245	1000*700*245	1000*700*245
	Packing	mm	1230*830*300	1230*830*300	1230*830*300
Weight	Net/Gross	kg	30/36	30/36	30/36
Pipe Diameter	Liquid Side	mm(inch)	9.52	9.52	9.52
	Gas Side	mm(inch)	15.88	15.88	15.88
	Drainage	mm(inch)	R3/4in(DN20)	R3/4in(DN20)	R3/4in(DN20)
Stuffing Quantity	20/40/40H	unit	72/151/164	72/151/164	72/151/164

Notes:

1.Cooling Capacity: Indoor Temperature 27°C DB/ 19°C WB;Outdoor Temperature:35°C DB/ 24°C WB.

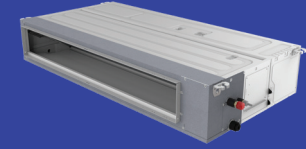
2.Heating Capacity: Indoor Temperature 20°C DB; Outdoor Temperature: 7°C DB/ 6°C WB.

3.Piping Length: Equivalent Piping Length: 7.5m, Level Difference: 0m.

4.Sound Level Is Measured At 1.4m Below The Unit.

5.The Above Designs And Specifications Are Subject To Change Without Prior Notice. Final Specifications Please Refer To Technical Specification Provided By Sales Representative.

VRF Indoor Unit  
Series : Mid ESP Duct  
Frequency : 50/60Hz



Model			ZRVMD-H80/NR1DM	ZRVMD-H90/NR1DM	ZRVMD-H100/NR1DM
Capacity	Cooling	kW	8.0	9.0	10.0
	Heating	kW	9.0	10.0	11.2
Electric Data	Power Supply	V~,Hz,Ph	220~240,50/60,1	220~240,50/60,1	220~240,50/60,1
	Rated Power	W	125	150	150
Performance	Air Flow Volume(Tu/Hi/Mid/Low)	m³/h	1680/1350/1100/950	1710/1400/1120/950	1710/1400/1120/950
	Noise Level(Hi/Mid/Low)	dB(A)	41/39/37	41/39/37	42/40/38
	External Static Pressure(ESP)	Pa	50(0-150)	50(0-150)	50(0-150)
Dimension (W*D*H)	Net	mm	1000*700*245	1000*700*245	1000*700*245
	Packing	mm	1230*830*300	1230*830*300	1230*830*300
Weight	Net/Gross	kg	30/36	32/38	32/38
Pipe Diameter	Liquid Side	mm(inch)	9.52	9.52	9.52
	Gas Side	mm(inch)	15.88	15.88	15.88
	Drainage	mm(inch)	R3/4in(DN20)	R3/4in(DN20)	R3/4in(DN20)
Stuffing Quantity	20/40/40H	unit	72/151/164	72/151/164	72/151/164

Notes:

1.Cooling Capacity: Indoor Temperature 27°C DB/ 19°C WB;Outdoor Temperature:35°C DB/ 24°C WB.

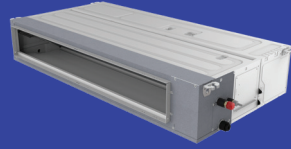
2.Heating Capacity: Indoor Temperature 20°C DB; Outdoor Temperature: 7°C DB/ 6°C WB.

3.Piping Length: Equivalent Piping Length: 7.5m, Level Difference: 0m.

4.Sound Level Is Measured At 1.4m Below The Unit.

5.The Above Designs And Specifications Are Subject To Change Without Prior Notice. Final Specifications Please Refer To Technical Specification Provided By Sales Representative.

VRF Indoor Unit  
Series : Mid ESP Duct  
Frequency : 50/60Hz



Model			ZRVMD-H112/NR1DM	ZRVMD-H125/NR1DM	ZRVMD-H140/NR1DM
Capacity	Cooling	kW	11.2	12.5	14.0
	Heating	kW	12.5	14.0	16.0
Electric Data	Power Supply	V~,Hz,Ph	220~240,50/60,1	220~240,50/60,1	220~240,50/60,1
	Rated Power	W	230	230	230
Performance	Air Flow Volume(Tu/Hi/Mid/Low)	m³/h	2300/1900/1600/1400	2300/1900/1600/1400	2300/1900/1600/1400
	Noise Level(Hi/Mid/Low)	dB(A)	44/42/40	44/42/40	44/42/40
	External Static Pressure(ESP)	Pa	50(0-150)	50(0-150)	50(0-150)
Dimension (W*D*H)	Net	mm	1400*700*245	1400*700*245	1400*700*245
	Packing	mm	1630*830*300	1630*830*300	1630*830*300
Weight	Net/Gross	kg	41/48	41/48	41/48
Pipe Diameter	Liquid Side	mm(inch)	9.52	9.52	9.52
	Gas Side	mm(inch)	15.88	15.88	15.88
	Drainage	mm(inch)	R3/4in(DN20)	R3/4in(DN20)	R3/4in(DN20)
Stuffing Quantity	20/40/40H	unit	49/98/112	49/98/112	49/98/112

Notes:

1.Cooling Capacity: Indoor Temperature 27°C DB/ 19°C WB;Outdoor Temperature:35°C DB/ 24°C WB.

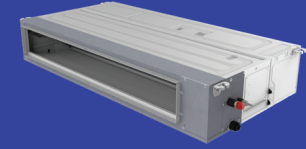
2.Heating Capacity: Indoor Temperature 20°C DB; Outdoor Temperature: 7°C DB/ 6°C WB.

3.Piping Length: Equivalent Piping Length: 7.5m, Level Difference: 0m.

4.Sound Level Is Measured At 1.4m Below The Unit.

5.The Above Designs And Specifications Are Subject To Change Without Prior Notice. Final Specifications Please Refer To Technical Specification Provided By Sales Representative.

VRF Indoor Unit  
Series : Mid ESP Duct  
Frequency : 50/60Hz



Model			ZRVMD-H150/NR1DM	ZRVMD-H160/NR1DM
Capacity	Cooling	kW	15.0	16.0
	Heating	kW	17.0	18.0
Electric Data	Power Supply	V~,Hz,Ph	220~240,50/60,1	220~240,50/60,1
	Rated Power	W	250	250
Performance	Air Flow Volume(Tu/Hi/Mid/Low)	m³/h	2400/2000/1700/1500	2300/1900/1600/1400
	Noise Level(Hi/Mid/Low)	dB(A)	45/43/41	44/42/40
	External Static Pressure(ESP)	Pa	50(0-150)	50(0-150)
Dimension (W*D*H)	Net	mm	1400*700*245	1400*700*245
	Packing	mm	1630*830*300	1630*830*300
Weight	Net/Gross	kg	41/48	41/48
Pipe Diameter	Liquid Side	mm(inch)	9.52	9.52
	Gas Side	mm(inch)	15.88	15.88
	Drainage	mm(inch)	R3/4in(DN20)	R3/4in(DN20)
Stuffing Quantity	20/40/40H	unit	49/98/112	49/98/112

Notes:

1.Cooling Capacity: Indoor Temperature 27°C DB/ 19°C WB;Outdoor Temperature:35°C DB/ 24°C WB.

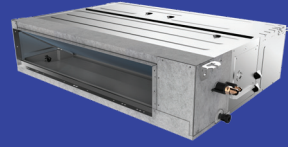
2.Heating Capacity: Indoor Temperature 20°C DB; Outdoor Temperature: 7°C DB/ 6°C WB.

3.Piping Length: Equivalent Piping Length: 7.5m, Level Difference: 0m.

4.Sound Level Is Measured At 1.4m Below The Unit.

5.The Above Designs And Specifications Are Subject To Change Without Prior Notice. Final Specifications Please Refer To Technical Specification Provided By Sales Representative.

VRF Indoor Unit  
Series : Mid ESP Duct  
Frequency : 50Hz



Model			ZRVMD-H45/4R1M	ZRVMD-H56/4R1M	ZRVMD-H71/4R1M
Capacity	Cooling	kW	4.5	5.6	7.1
	Heating	kW	5.6	6.3	8.0
Electric Data	Power Supply	V~,Hz,Ph	220~240,50,1	220~240,50,1	220~240,50,1
	Rated Power	W	215	215	215
Performance	Air Flow Volume(Tu/Hi/Mid/Low)	m³/h	1000/800/660/520	1000/800/660/520	1500/1200/930/730
	Noise Level(Hi/Mid/Low)	dB(A)	42/39/36	42/39/36	43/40/37
	External Static Pressure(ESP)	Pa	50	50	50
Dimension (W*D*H)	Net	mm	1000*700*245	1000*700*245	1000*700*245
	Packing	mm	1230*830*300	1230*830*300	1230*830*300
Weight	Net/Gross	kg	30/36	30/36	30/36
Pipe Diameter	Liquid Side	mm(inch)	9.52	9.52	9.52
	Gas Side	mm(inch)	15.88	15.88	15.88
	Drainage	mm(inch)	R3/4in(DN20)	R3/4in(DN20)	R3/4in(DN20)
Stuffing Quantity	20/40/40H	unit	72/151/164	72/151/164	72/151/164

Notes:

1.Cooling Capacity: Indoor Temperature 27°C DB/ 19°C WB; Outdoor Temperature:35°C DB/ 24°C WB.

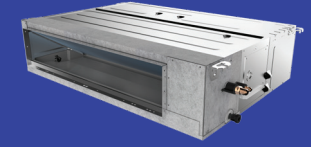
2.Heating Capacity: Indoor Temperature 20°C DB; Outdoor Temperature:7°C DB/ 6°C WB.

3.Piping Length: Equivalent Piping Length: 7.5m, Level Difference: 0m.

4.Sound Level Is Measured At 1.4m Below The Unit.

5.The Above Designs And Specifications Are Subject To Change Without Prior Notice. Final Specifications Please Refer To Technical Specification Provided By Sales Representative.

VRF Indoor Unit  
Series : Mid ESP Duct  
Frequency : 50Hz



Model			ZRVMD-H80/4R1M	ZRVMD-H90/4R1M	ZRVMD-H100/4R1M
Capacity	Cooling	kW	8.0	9.0	10.0
	Heating	kW	9.5	10.0	11.2
Electric Data	Power Supply	V~,Hz,Ph	220~240,50,1	220~240,50,1	220~240,50,1
	Rated Power	W	215	220	220
Performance	Air Flow Volume(Tu/Hi/Mid/Low)	m³/h	1500/1200/930/730	1500/1210/950/750	1500/1210/950/750
	Noise Level(Hi/Mid/Low)	dB(A)	43/40/37	44/41/38	44/41/38
	External Static Pressure(ESP)	Pa	50	50	50
Dimension (W*D*H)	Net	mm	1000*700*245	1000*700x245	1000*700*245
	Packing	mm	1230*830*300	1230*830*300	1230*830*300
Weight	Net/Gross	kg	30/36	32/38	32/38
Pipe Diameter	Liquid Side	mm(inch)	9.52	9.52	9.52
	Gas Side	mm(inch)	15.88	15.88	15.88
	Drainage	mm(inch)	R3/4in(DN20)	R3/4in(DN20)	R3/4in(DN20)
Stuffing Quantity	20/40/40H	unit	72/151/164	72/151/164	72/151/164

Notes:

1.Cooling Capacity: Indoor Temperature 27°C DB/ 19°C WB; Outdoor Temperature:35°C DB/ 24°C WB.

2.Heating Capacity: Indoor Temperature 20°C DB; Outdoor Temperature:7°C DB/ 6°C WB.

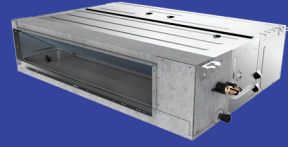
3.Piping Length: Equivalent Piping Length: 7.5m, Level Difference: 0m.

4.Sound Level Is Measured At 1.4m Below The Unit.

5.The Above Designs And Specifications Are Subject To Change Without Prior Notice. Final Specifications Please Refer To Technical Specification Provided By Sales Representative.



VRF Indoor Unit  
Series : Mid ESP Duct  
Frequency : 50Hz



Model			ZRVMD-H112/4R1M	ZRVMD-H125/4R1M
Capacity	Cooling	kW	11.2	12.5
	Heating	kW	12.5	14.0
Electric Data	Power Supply	V~,Hz,Ph	220~240,50,1	220~240,50,1
	Rated Power	W	310	310
Performance	Air Flow Volume(Tu/Hi/Mid/Low)	m³/h	2100/1870/1550/1320	2100/1870/1550/1320
	Noise Level(Hi/Mid/Low)	dB(A)	45/42/39	45/42/39
	External Static Pressure(ESP)	Pa	50	50
Dimension (W*D*H)	Net	mm	1400*700*245	1400*700*245
	Packing	mm	1630*830*300	1630*830*300
Weight	Net/Gross	kg	43/50	43/50
Pipe Diameter	Liquid Side	mm(inch)	9.52	9.52
	Gas Side	mm(inch)	15.88	15.88
	Drainage	mm(inch)	R3/4in(DN20)	R3/4in(DN20)
Stuffing Quantity	20/40/40H	unit	49/98/112	49/98/112

Notes:

1.Cooling Capacity: Indoor Temperature 27°C DB/ 19°C WB; Outdoor Temperature:35°C DB/ 24°C WB.

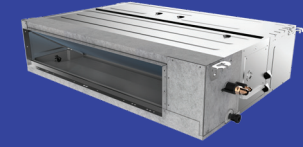
2.Heating Capacity: Indoor Temperature 20°C DB; Outdoor Temperature:7°C DB/ 6°C WB.

3.Piping Length: Equivalent Piping Length: 7.5m, Level Difference: 0m.

4.Sound Level Is Measured At 1.4m Below The Unit.

5.The Above Designs And Specifications Are Subject To Change Without Prior Notice. Final Specifications Please Refer To Technical Specification Provided By Sales Representative.

VRF Indoor Unit  
Series : Mid ESP Duct  
Frequency : 50Hz



Model			ZRVMD-H140/4R1M	ZRVMD-H150/4R1M
Capacity	Cooling	kW	14.0	15.0
	Heating	kW	15.5	16.5
Electric Data	Power Supply	V~,Hz,Ph	220~240,50,1	220~240,50,1
	Rated Power	W	310	310
Performance	Air Flow Volume(Tu/Hi/Mid/Low)	m³/h	2100/1870/1550/1320	2100/1870/1550/1320
	Noise Level(Hi/Mid/Low)	dB(A)	45/42/39	46/43/40
	External Static Pressure(ESP)	Pa	50	50
Dimension (W*D*H)	Net	mm	1400*700*245	1400*700*245
	Packing	mm	1630*830*300	1630*830*300
Weight	Net/Gross	kg	43/50	43/50
Pipe Diameter	Liquid Side	mm(inch)	9.52	9.52
	Gas Side	mm(inch)	15.88	15.88
	Drainage	mm(inch)	R3/4in(DN20)	R3/4in(DN20)
Stuffing Quantity	20/40/40H	unit	49/98/112	49/98/112

Notes:

1.Cooling Capacity: Indoor Temperature 27°C DB/ 19°C WB; Outdoor Temperature:35°C DB/ 24°C WB.

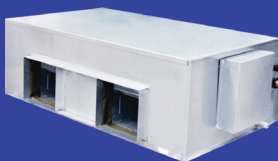
2.Heating Capacity: Indoor Temperature 20°C DB; Outdoor Temperature:7°C DB/ 6°C WB.

3.Piping Length: Equivalent Piping Length: 7.5m, Level Difference: 0m.

4.Sound Level Is Measured At 1.4m Below The Unit.

5.The Above Designs And Specifications Are Subject To Change Without Prior Notice. Final Specifications Please Refer To Technical Specification Provided By Sales Representative.

VRF Indoor Unit  
Series : High ESP Duct  
Frequency : 50Hz



Model			ZRVHD-H112/4R1A	ZRVHD-H125/4R1A	ZRVHD-H140/4R1A
Capacity	Cooling	kW	11.2	12.5	14.0
	Heating	kW	12.8	13.3	15.0
Electric Data	Power Supply	V~,Hz,Ph	220~240,50,1	220~240,50,1	220~240,50,1
	Rated Power	W	600	600	600
Performance	Air Flow Volume(Hi/Mid/Low)	m³/h	2000/1600/1400	2000/1600/1400	2000/1600/1400
	Noise Level(Hi/Mid/Low)	dB(A)	60/57/51	60/57/51	60/57/51
	External Static Pressure(ESP)	Pa	196	196	196
Dimension (W*D*H)	Net	mm	1200*719*380	1200*719*380	1200*719*380
	Packing	mm	1235*760*415	1235*760*415	1235*760*415
Weight	Net/Gross	kg	56/59	56/59	56/59
Pipe Diameter	Liquid Side	mm(inch)	9.52	9.52	9.52
	Gas Side	mm(inch)	19.05	19.05	19.05
	Drainage	mm	R3/4in(DN20)	R3/4in(DN20)	R3/4in(DN20)
Stuffing Quantity	20/40/40H	unit	68/147/168	68/147/168	68/147/168

Notes:

1.Cooling Capacity: Indoor Temperature 27°C DB/19°C WB; Outdoor Temperature:35°C DB/ 28°C WB.

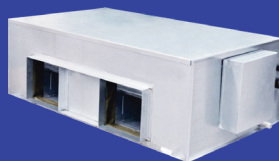
2.Heating Capacity: Indoor Temperature 20°C DB; Outdoor Temperature: 7°C DB/ 6°C WB.

3.Piping Length: Equivalent Piping Length: 7.5m, Level Difference: 0m.

4.Sound Level Is Measured At 1.4m Below The Unit.

5.The Above Designs And Specifications Are Subject To Change Without Prior Notice. Final Specifications Please Refer To Technical Specification Provided By Sales Representative.

VRF Indoor Unit  
Series : High ESP Duct  
Frequency : 50Hz



Model			ZRVHD-H150/4R1A	ZRVHD-H450/5R1Y	ZRVHD-H560/5R1Y
Capacity	Cooling	kW	15.0	45.0	56.0
	Heating	kW	16.0	56.0	61.5
Electric Data	Power Supply	V~,Hz,Ph	220~240,50,1	380~415,,50,3	380~415,,50,3
	Rated Power	W	600	1520	1520
Performance	Air Flow Volume(Hi/Mid/Low)	m³/h	2000/1600/1400	6500	7400
	Noise Level(Hi/Mid/Low)	dB(A)	60/57/51	59	59
	External Static Pressure(ESP)	Pa	196	200	200
Dimension (W*D*H)	Net	mm	1200*719*380	2115*990*855	2115*990*855
	Packing	mm	1235*760*415	2225*1025*1015	2225*1025*1015
Weight	Net/Gross	kg	56/59	225/255	225/255
Pipe Diameter	Liquid Side	mm(inch)	9.52	12.7x2	12.7x2
	Gas Side	mm(inch)	19.05	22.2x2	22.2x2
	Drainage	mm	R3/4in(DN20)	R1in(DN25)	R1in(DN25)
Stuffing Quantity	20/40/40H	unit	68/147/168	2024/12/24	2024/12/24

Notes:

1.Cooling Capacity: Indoor Temperature 27°C DB/19°C WB; Outdoor Temperature:35°C DB/ 28°C WB.

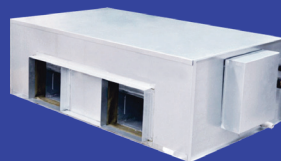
2.Heating Capacity: Indoor Temperature 20°C DB; Outdoor Temperature: 7°C DB/ 6°C WB.

3.Piping Length: Equivalent Piping Length: 7.5m, Level Difference: 0m.

4.Sound Level Is Measured At 1.4m Below The Unit.

5.The Above Designs And Specifications Are Subject To Change Without Prior Notice. Final Specifications Please Refer To Technical Specification Provided By Sales Representative.

VRF Indoor Unit  
Series : High ESP Duct  
Frequency : 50/60Hz



Model			ZRVHD-H220/NR1DC	ZRVHD-H280/NR1DC
Capacity	Cooling	kW	22.4	28
	Heating	kW	25	31.5
Electric Data	Power Supply	V~,Hz,Ph	220~240,50/60,1	220~240,50/60,1
	Rated Power	W	1200	1200
Performance	Air Flow Volume	m³/h	4400	4400
	Noise Level	dB(A)	57	57
	External Static Pressure(ESP)	Pa	170(30-250)	170(30-250)
Dimension (W*D*H)	Net	mm	1388*715*480	1388*715*480
	Packing	mm	1540*810*610	1540*810*610
Weight	Net/Gross	kg	99/120	99/120
	Liquid Side	mm(inch)	12.7(1/2)	12.7(1/2)
Pipe Diameter	Gas Side	mm(inch)	22.2(7/8)	22.2(7/8)
	Drainage	mm	OD33.5	OD33.5
Stuffing Quantity	20/40/40H	unit	30/63/84	30/63/84

Notes:

1.Cooling Capacity: Indoor Temperature 27°C DB/19°C WB; Outdoor Temperature:35°C DB/ 28°C WB.

2.Heating Capacity: Indoor Temperature 20°C DB; Outdoor Temperature: 7°C DB/ 6°C WB.

3.Piping Length: Equivalent Piping Length: 7.5m, Level Difference: 0m.

4.Sound Level Is Measured At 1.4m Below The Unit.

5.The Above Designs And Specifications Are Subject To Change Without Prior Notice. Final Specifications Please Refer To Technical Specification Provided By Sales Representative.

VRF Indoor Unit  
Series : Fresh Air Processor  
Frequency : 50Hz



Model			ZRVFA-H450/5R1A	ZRVFA-H560/5R1A
Capacity	Cooling	kW	45.0	56.0
	Heating	kW	49.5	61.5
Electric Data	Power Supply	V~,Hz,Ph	380~415,50/60,3	380~415,50/60,3
	Rated Power	W	1520	1520
Performance	Air Flow Volume	m³/h	4000	5000
	Noise Level	dB(A)	57	59
	External Static Pressure(ESP)	Pa	220	220
Dimension (W*D*H)	Net	mm	1820*990*855	2115*990*855
	Packing	mm	1935*1025*1015	2225*1025*1015
Weight	Net/Gross	kg	150/170	225/255
	Liquid Side	mm(inch)	12.7*2	12.7*2
Pipe Diameter	Gas Side	mm(inch)	22.2*2	22.2*2
	Drainage	mm	DN25	DN25
Stuffing Quantity	20/40/40H	unit	12/24/24	12/24/24

Notes:

1.Cooling Capacity: Outdoor Temperature 35°C DB/28°C WB.

2.Heating Capacity: Outdoor Temperature 7°C DB/6°C WB.

3.Piping Length: Equivalent Piping Length: 7.5m, Level Difference: 0m.

4.Sound Level Is Measured At 1.4m Below The Unit.

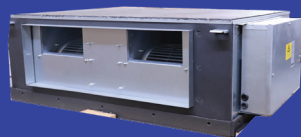
5.The Above Design And Specifications Are Subject To Change Without Prior Notice. Final Specifications Please Refer To Technical Specification Provided By Sales Representative.

Connection Conditions:

When Only Outdoor-Air Processing Units Are Connected, The Total Capacity Of The Outdoor-Air Processing Units Must Be Within 50%~100% Of The Outdoor Units.

When Outdoor-Air Processing Units And Other Type Indoor Units Are Connected, The Total Capacity Of The Outdoor-Air Processing Units Must Not Exceed 30% Of The Outdoor Units.

VRF Indoor Unit  
Series : Fresh Air Processor  
Frequency : 50/60Hz



Model			ZRVFA-H220/NR1DC	ZRVFA-H280/NR1DC
Capacity	Cooling	kW	22.4	28.0
	Heating	kW	18.0	22.0
Electric Data	Power Supply	V~,Hz,Ph	220~240,50/60,1	220~240,50/60,1
	Rated Power	W	900	900
Performance	Air Flow Volume	m³/h	3200	3200
	Noise Level	dB(A)	55	55
	External Static Pressure(ESP)	Pa	220	220
Dimension (W*D*H)	Net	mm	1388*715*480	1388*715*480
	Packing	mm	1540*810*610	1540*810*610
Weight	Net/Gross	kg	99/120	99/120
Pipe Diameter	Liquid Side	mm(inch)	12.7(1/2)	12.7(1/2)
	Gas Side	mm(inch)	22.2(7/8)	22.2(7/8)
	Drainage	mm	OD33.5	OD33.5
Stuffing Quantity	20/40/40H	unit	30/63/84	30/63/84

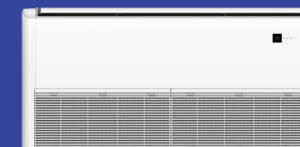
Notes:

- 1.Cooling Capacity: Outdoor Temperature 35°C DB/28°C WB.
- 2.Heating Capacity: Outdoor Temperature 7°C DB/6°C WB.
- 3.Piping Length: Equivalent Piping Length: 7.5m, Level Difference: 0m.
- 4.Sound Level Is Measured At 1.4m Below The Unit.
- 5.The Above Design And Specifications Are Subject To Change Without Prior Notice. Final Specifications Please Refer To Technical Specification Provided By Sales Representative.

Connection Conditions:

When Only Outdoor-Air Processing Units Are Connected, The Total Capacity Of The Outdoor-Air Processing Units Must Be Within 50%~100% Of The Outdoor Units.  
When Outdoor-Air Processing Units And Other Type Indoor Units Are Connected, The Total Capacity Of The Outdoor-Air Processing Units Must Not Exceed 30% Of The Outdoor Units.

VRF Indoor Unit  
Series : Ceiling & Floor  
Frequency : 50/60Hz



Model			ZRVCF-H45/NR1DF	ZRVCF-H56/NR1DF	ZRVCF-H71/NR1DF
Capacity	Cooling	kW	4.5	5.6	7.1
	Heating	kW	5.0	6.3	8.0
Electric Data	Power Supply	V~,Hz,Ph	220-240V,50/60,1	220-240V,50/60,1	220-240V,50/60,1
	Rated Power	W	40	40	40
Performance	Air Flow Volume (TuHi/Mid/Low/Sl)	m³/h	940/895/700/650/600	940/895/700/650/600	940/895/700/650/600
	Noise Level(Tu/Hi/Mi/Lo/Sl)	dB(A)	42/41/38/37/36	42/41/38/37/36	42/41/38/37/36
Dimension (W*D*H)	Net	mm	1000*690*235	1000*690*235	1000*690*235
	Packing	mm	1080*770*325	1080*770*325	1080*770*325
Weight	Net	kg	29/33.5	29/33.5	29/33.5
Pipe Diameter	Liquid Side	mm(inch)	6.35(1/4)	6.35(1/4)	6.35(1/4)
	Gas Side	mm(inch)	12.7(1/2)	12.7(1/2)	12.7(1/2)
	Drainage	mm(inch)	R3/4in(DN20)	R3/4in(DN20)	R3/4in(DN20)
Stuffing Quantity	20/40/40H	unit	112/224/264	112/224/264	112/224/264

Notes:

- 1.Cooling Capacity: Indoor Temperature 27°C DB/19°C WB; Outdoor Temperature:35°C DB/24°C WB.
- 2.Heating Capacity: Indoor Temperature 20°C DB;Outdoor Temperature:7°C DB/6°C WB.
- 3.Piping Length: Equivalent Piping Length: 7.5m, Level Difference: 0m.
- 4.Floor Standing: Sound Level Is Measured 1m From Air-Outlet In Horizontal Distance, 1m Above The Floor In Vertical Distance.
- 5.Ceiling Mounted: Sound Level Is Measured 1m From Air-Outlet In Horizontal Distance,1m From Air-Outlet In Vertical Distance.
- 6.The Above Designs And Specifications Are Subject To Change Without Prior Notice. Final Specifications Please Refer To Technical Specification Provided By Sales Representative.



**VRF Indoor Unit**  
**Series : Ceiling & Floor**  
**Frequency : 50/60Hz**

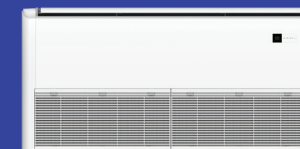


Model			ZRVCF-H80/NR1DF	ZRVCF-H90/NR3DF	ZRVCF-H112/NR4DF
Capacity	Cooling	kW	8.0	9.0	11.2
	Heating	kW	9.0	11.0	12.8
Electric Data	Power Supply	V~,Hz,Ph	220-240V,50/60,1	220-240V,50/60,1	220-240V,50/60,1
	Rated Power	W	70	70	120
Performance	Air Flow Volume (Tu/Hi/Mid/Low/Sl)	m³/h	1300/1245/1020/930/840	1300/1245/1020/930/840	2040/1890/1740/1560//1440
	Noise Level(Tu/Hi/Mi/Lo/Sl)	dB(A)	43/42/39/38/37	43/42/39/38/37	50/49/45/43/41
Dimension (W*D*H)	Net	mm	1280*690*235	1280*690*235	1600*690*235
	Packing	mm	1360*770*325	1360*770*325	1680*770*325
Weight	Net	kg	35.5/41	35.5/41	42/49
Pipe Diameter	Liquid Side	mm(inch)	9.52(3/8)	9.52(3/8)	9.52(3/8)
	Gas Side	mm(inch)	15.88(5/8)	15.88(5/8)	15.88(5/8)
	Drainage	mm(inch)	R3/4in(DN20)	R3/4in(DN20)	R3/4in(DN20)
Stuffing Quantity	20/40/40H	unit	84/175/200	84/175/200	70/147/168

**Notes:**

- 1.Cooling Capacity: Indoor Temperature 27°C DB/19°C WB; Outdoor Temperature:35°C DB/24°C WB.
- 2.Heating Capacity: Indoor Temperature 20°C DB;Outdoor Temperature:7°C DB/6°C WB.
- 3.Piping Length: Equivalent Piping Length: 7.5m, Level Difference: 0m.
- 4.Floor Standing: Sound Level Is Measured 1m From Air-Outlet In Horizontal Distance, 1m Above The Floor In Vertical Distance.
- 5.Ceiling Mounted: Sound Level Is Measured 1m From Air-Outlet In Horizontal Distance,1m From Air-Outlet In Vertical Distance.
- 6.The Above Designs And Specifications Are Subject To Change Without Prior Notice. Final Specifications Please Refer To Technical Specification Provided By Sales Representative.

**VRF Indoor Unit**  
**Series : Ceiling & Floor**  
**Frequency : 50/60Hz**

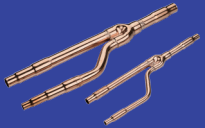
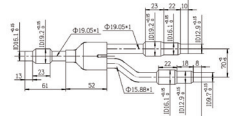
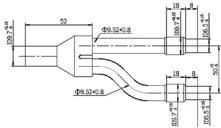
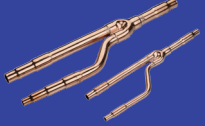
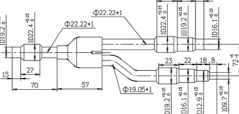
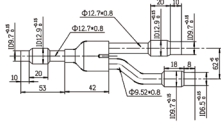
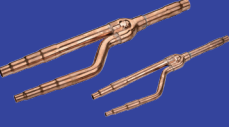
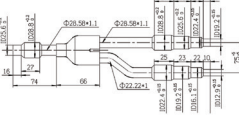
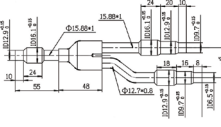
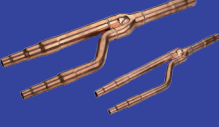
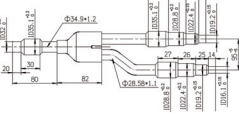
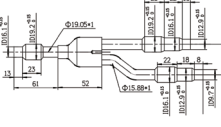
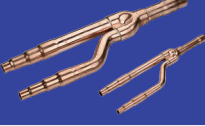
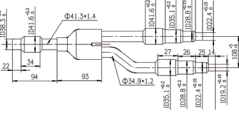
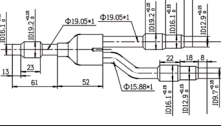

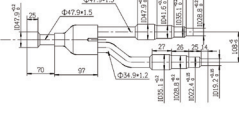
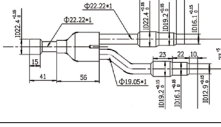

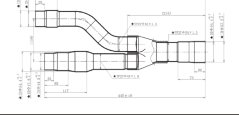
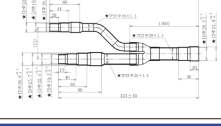


Model			ZRVCF-H125/NR5DF	ZRVCF-H140/NR6DF
Capacity	Cooling	kW	12.5	14.0
	Heating	kW	14.0	15.0
Electric Data	Power Supply	V~,Hz,Ph	220-240V,50/60,1	220-240V,50/60,1
	Rated Power	W	120	120
Performance	Air Flow Volume (Tu/Hi/Mid/Low/Sl)	m³/h	2040/1890/1740/1560/1440	2040/1890/1740/1560/1440
	Noise Level(Tu/Hi/Mi/Lo/Sl)	dB(A)	50/49/45/43/41	50/49/45/43/41
Dimension (W*D*H)	Net	mm	1600*690*235	1600*690*235
	Packing	mm	1680*770*325	1680*770*325
Weight	Net	kg	42/49	42/49
Pipe Diameter	Liquid Side	mm(inch)	9.52(3/8)	9.52(3/8)
	Gas Side	mm(inch)	15.88(5/8)	15.88(5/8)
	Drainage	mm(inch)	R3/4in(DN20)	R3/4in(DN20)
Stuffing Quantity	20/40/40H	unit	70/147/168	70/147/168

**Notes:**

- 1.Cooling Capacity: Indoor Temperature 27°C DB/19°C WB; Outdoor Temperature:35°C DB/24°C WB.
- 2.Heating Capacity: Indoor Temperature 20°C DB;Outdoor Temperature:7°C DB/6°C WB.
- 3.Piping Length: Equivalent Piping Length: 7.5m, Level Difference: 0m.
- 4.Floor Standing: Sound Level Is Measured 1m From Air-Outlet In Horizontal Distance, 1m Above The Floor In Vertical Distance.
- 5.Ceiling Mounted: Sound Level Is Measured 1m From Air-Outlet In Horizontal Distance,1m From Air-Outlet In Vertical Distance.
- 6.The Above Designs And Specifications Are Subject To Change Without Prior Notice. Final Specifications Please Refer To Technical Specification Provided By Sales Representative.

Branch Pipe

Model	Appearance	Dimension	
		Gas Side Joints	Liquid Side Joints
ZFG-00B			
ZFG-12B			
ZFG-24B			
ZFG-34B			
ZFG-50B			
ZFG-64B			
ZFG-144B			
Model	Packing Dimension(mm)		Net Weight/Gross Weight(kg)
ZFG-00B	300*95*40		0.31/0.35
ZFG-12B	330*100*40		0.44/0.49
ZFG-24B	370*115*45		0.71/0.77
ZFG-34B	440*140*50		1.11/1.20
ZFG-50B	480*160*65		1.65/1.76
ZFG-64B	480*160*65		1.88/1.98
ZFG-144B	505*180*80		2.49/2.62